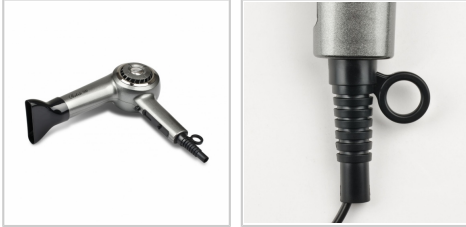


PH90 HAIR DRYER



DESCRIPTION

Designed to achieve excellent results, our 1800-watt power hair dryer model PH90 is perfect to meet all your style needs. Lightweight and handy, it's ideal for adding volume, straightening or making waves to any type of hair. Quality, performance and durability are the greatest qualities of this appliance, thanks to which you will get in a few minutes straight and silky hair, reducing frizz and static and keeping the skin healthy and your hair natural and nice looking. Equipped with 3 heat settings and 2 speeds for a complete drying, this unit also includes the cool shot function, to best fix your hairstyle, thin air concentrator and power cable with ring for easy hanging.

TECHNICAL FEATURES

- | | |
|---------------------------------------|-----------------------------------|
| ✓ Power: 1500-1800W | ✓ 2 speeds, 3 temperatures |
| ✓ Cool shot function | ✓ Concentrator |
| ✓ Power supply: AC 220-240V ~ 50/60Hz | ✓ Dim.: (O x H): 28 x 28 x 8.5 cm |
| ✓ Weight: 520g | |